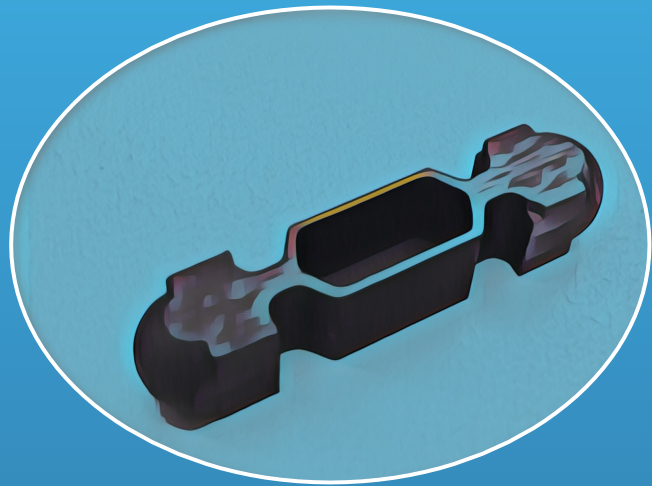


Your Specialized  
Partner for Lung  
Scintigraphy



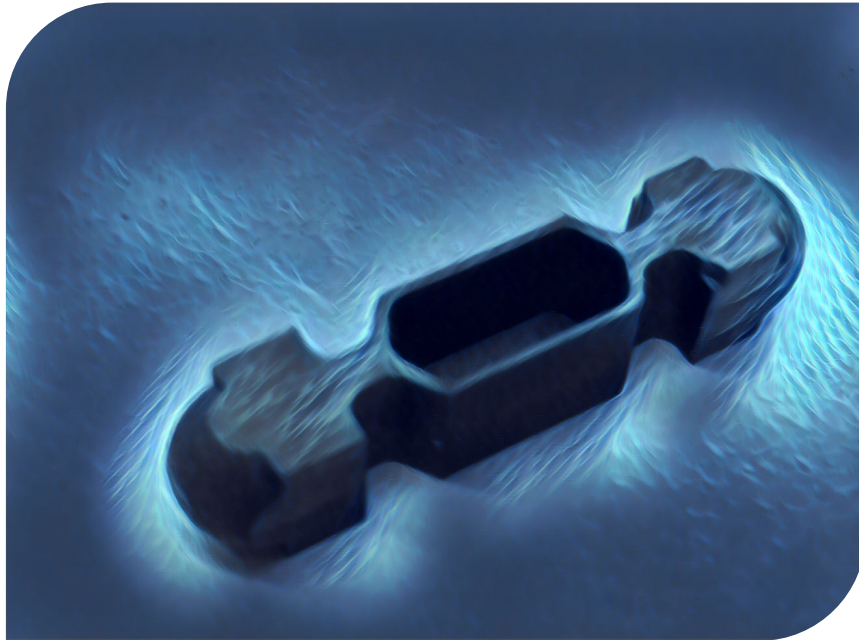
## vent-medix-box

---

Single use, disposable kit for ventilation scintigraphy

Contains:

- 50 almedix High Volume crucibles in protective plastic box
- 50 almedix-sets comprising:
  - individually packaged, single use patient breathing units
- one pair of pure carbon contacts
- instructions for use



With the almedis High Volume Crucible you benefit from saving time and avoiding radiation exposure performing multiple simmering procedures. With a bowl capacity of 0.3 ml you have more than double the volume to reach the required concentration.

almedis High Volume Crucibles have been sold and used since 2002 as a certified medical device class 2a. More than 150,000 successful scans attest to its quality and reliability and a market share of almost 100% in Germany, to its widespread acceptance.

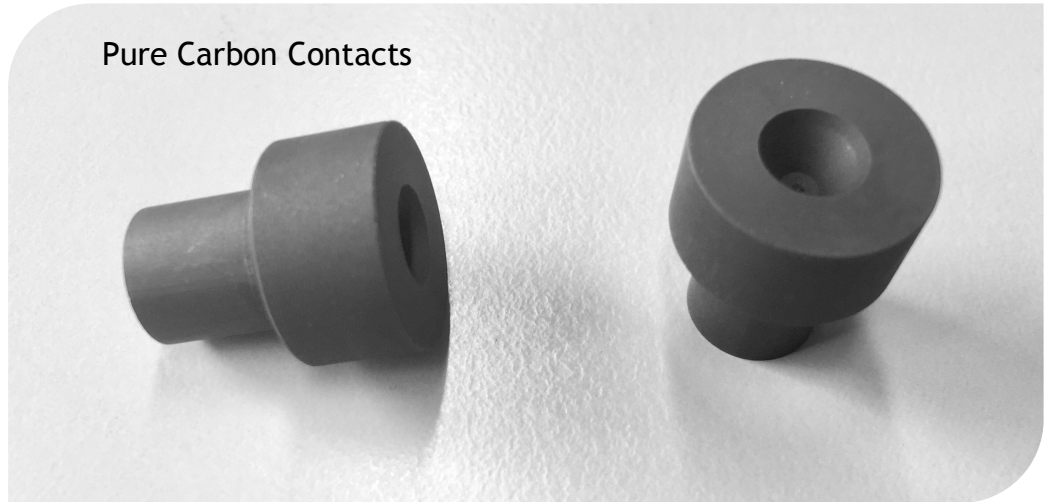
In daily clinical practice, the High Volume Crucibles improve customer convenience by reducing the number of simmering procedures that need to be performed to reach the required crucible activity and, potentially, less exposure to Technetium 99m for staff. This assumption is further confirmed by the 2017 guidelines of the German Society for Nuclear Medicine DGN (“Deutsche Gesellschaft für Nuklearmedizin” (Schümichen, Schmidt, & Krause, 2017)), that specifically recommended the use of a High Volume Crucible in cases of low specific-activity sodium pertechnetate due to the potential risk of hygroscopic growth of saline associated with secondary particle growth due to repeated simmering.

**High purity carbon:** Studies confirm impurities of less than 2 ppm in the ash content of the almedis High Volume Crucibles. Produced in Germany, the High Volume Crucibles provide an outstanding and superior degree of purity.

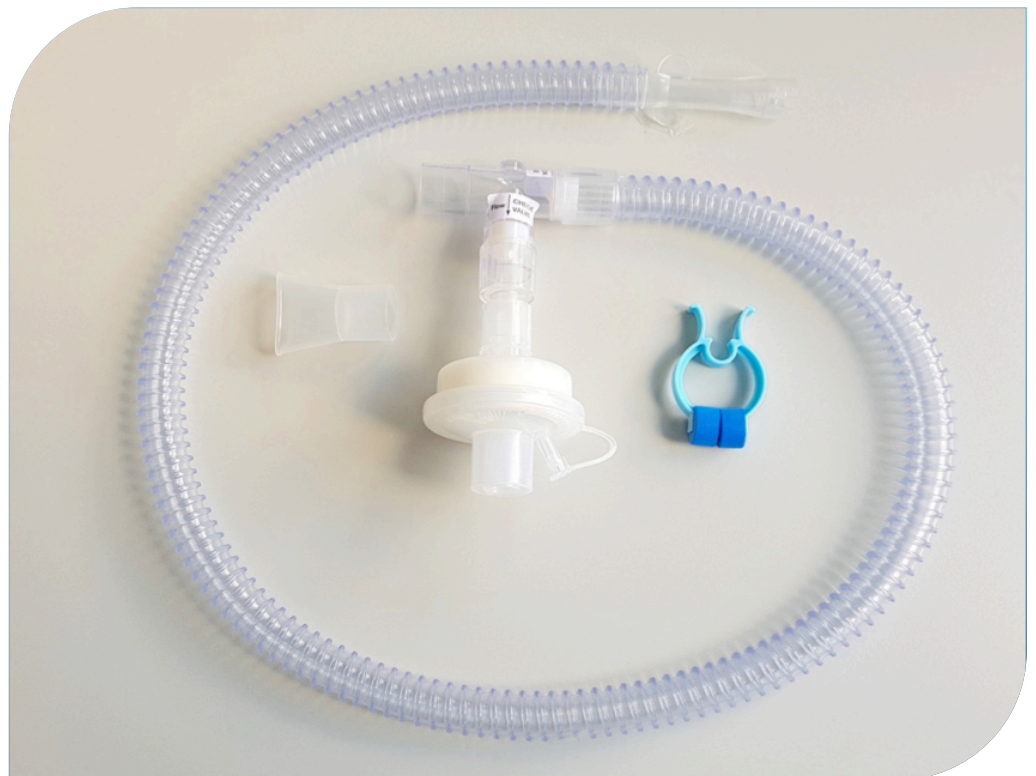
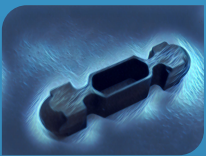


Protective plastic box with 50 High Volume Crucibles.

Pure Carbon Contacts



With every vent-medix-box you get one pair of pure carbon contacts for 50 scintigraphic examinations. The carbon contacts are very robust and fit the Generator specifications.



The inhalation breathing unit, almedis-set, contains a HEPA exhalation filter, T-piece with two valves, a robust one meter smooth bore with 15 mm inner diameter and the generator connection.

A rigid mouthpiece and a nose clip complete the set.

Each almedis-Set is an individually packaged, single use kit in a plastic bag which can be used for disposal after the examination.



almedis High Volume Crucibles, almedis-Set and contacts are products from almedis Altmann GmbH and exclusively distributed worldwide by vent-medis GmbH, Salzgitter, Germany

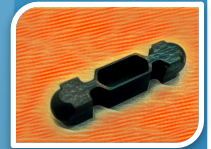
The vent-medis-box contains 50 High Volume crucibles, 50 almedis-Sets, one pair of contacts and the Instruction for use.

## Mobile Aerosol Extraction System

### Mobile extraction system (AES) for aerosols and pseudo gas

With the mobile suction system the company vent-medis offers you an ideal additional device for an increasing safety during lung ventilation with active aerosols and quasigases. The mobile device is easy to handle, easy to use and requires little space footprint 40 x 50 cm, hood diameter 50 cm.

With this system you can achieve additional safety when using aerosols and quasigases. The device sucks in the ambient air in the head area of the patient and filters it. If aerosol / quasigas escapes due to a patient error during exhalation or due to a sudden coughing, it can be aspirated and thus greatly reduced indoor air contamination.



**The filter unit** in the device is specially designed for technetium graphite particles and contains a powerful dual filter system consisting of a pre-filter and a high-performance ULPA (Ultra Low Penetration Air Filter) filter.

**The controller unit** of the device has a digital full-text operating panel with speed control, filter monitoring and operating hours counter.

**The swivel arm** has a tube diameter of 7.5 cm and a reach of 85 cm. The round, transparent dome hood has a patient-friendly diameter of 50 cm.

**The housing** is made of sturdy sheet steel and runs on smooth-running double castors. It has a wide device handle on the top as well as a large cable holder with combined wall protection on the back. The housing is not lead shielded.

#### Technical data of the filter device:

Flow rate: 390 m<sup>3</sup> / h

Pressure difference: 4000 Pa

Motor rated power: 240 W

Speed: max. 8200 rpm

Rated voltage: 230 V, 50 Hz

Current consumption: max. 2,0 A

Dimension WxDxH: 40x57x76 cm

Weight: about 50 kg



vent-medis is your specialized worldwide partner and distributor for products and services for lung ventilation scintigraphy.

vent-medis... ***"we are the lung"***

*With more than 20 years of experience in the field of lung scintigraphy, with a team of skilled and experienced technicians and application specialists within a global network, vent-medis is your new specialized and reliable partner for lung-scanning.*



Distributor

vent-medis GmbH  
Museumstraße 69  
38229 Salzgitter -Germany-

[vent-medis.com](http://vent-medis.com)

[info@vent-medis.com](mailto:info@vent-medis.com)